

4							
3	Screw	Steel		Nickel			M3
2	Terminal	Brass	1/2H	TIN			0.8t
1	Base	PBT	UL94V-0		Black		
No.	COMPONENT PARTS	MATERIAL	STANDARD	PLATED	COLOR	Q'TY	REMARK

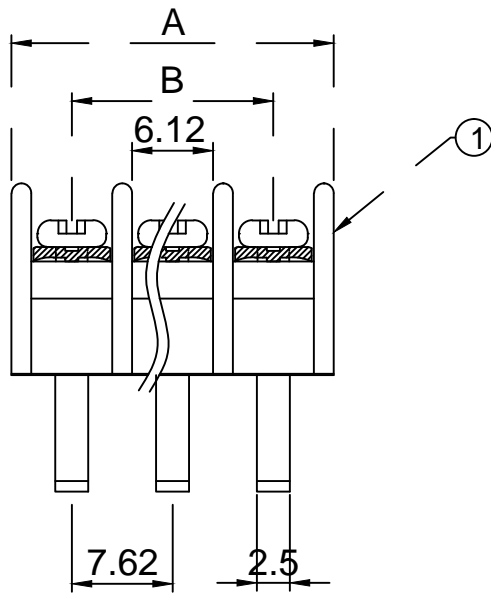
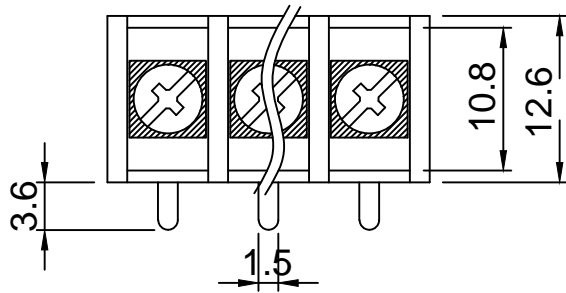
Current rating	AC250V 10Amp
Insulation resistance	500M Ohms of More at DC500V
Withstand voltage	AC2000V/Minute
Wire range	AWG #18~#26
Torque	5.2 lb-in

( Option )

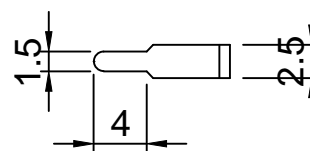
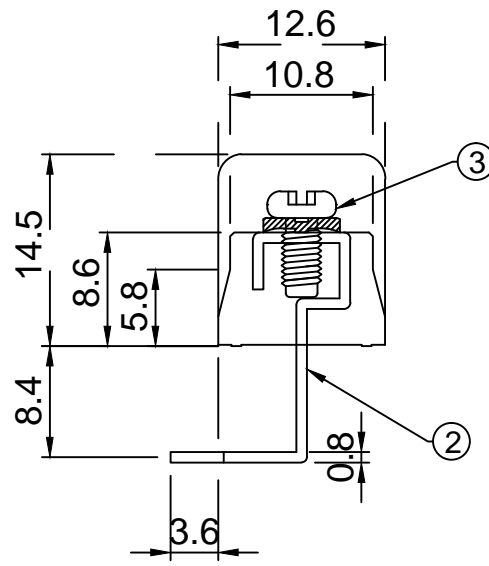
\* Brass Screw

\* Cover: PC투명.

적용시 모델번호 뒤에 "C" 추가



PCB hole Dia:  $\phi 1.8$



Pin	2	3	4	5	6	7	8	9	10	11	12	13	~
A $\pm 0.8$	16.74	24.36	31.98	39.63	47.22	54.84	62.46	70.08	77.7	85.32	92.94	100.56	+7.62 ~
B $\pm 0.5$	7.62	15.24	22.86	30.48	38.1	45.72	53.34	60.96	68.58	76.2	83.82	91.44	+7.62 ~

GENERAL TOLERANCES		Part Name.		Dwg No.	
0 ~ 50	$\pm 0.5$	Terminal Block		BI-762C-BL-**P	
50 ~ 100	$\pm 0.8$				
100 ~ 150	$\pm 1.0$	Drawing BY.	Checkd BY.	Approval BY.	Sheet No.
150 ~ 200	$\pm 1.5$				of
Scale	/	(주) 부일일렉트로닉스 BUIL ELECTRONICS CO., LTD ( www.ebuil.com )			
Material					